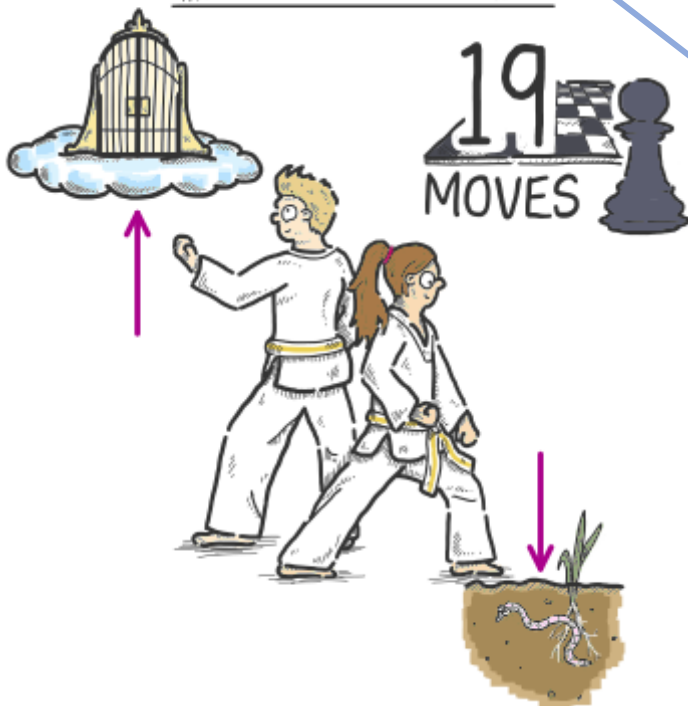


CHON-JI



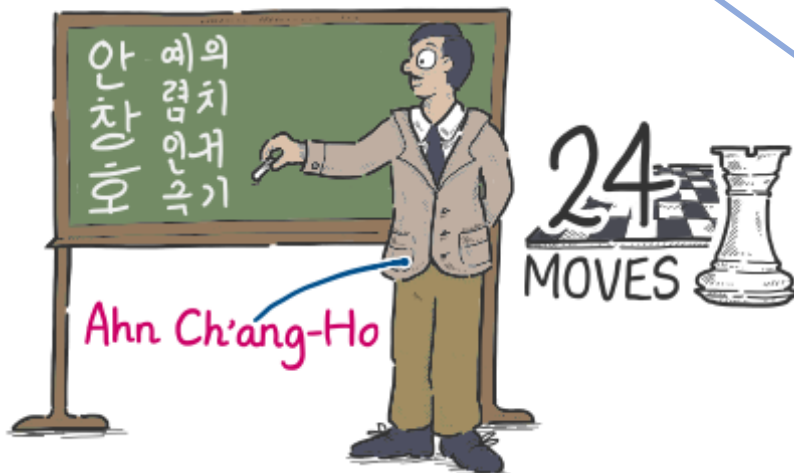
"The **heaven** and the **earth**". One half of the pattern represents earth, and the other heaven. Heaven and earth symbolise the beginning of the world, so Chon-Ji is the pattern of the beginner.

Named after the legendary **Dan-Gun** (who was descended from a bear according to legend) said to have founded Korea in 2333 BC.

DAN-GUN



DO-SAN



Do-San is another name for **Ahn Ch'ang-Ho** (1876-1938), who devoted his life to furthering the education of Korea and its independent movement.